

RECALL

 Complete:



There are ___ equal groups with ___ in each group.

There are three ___s.

$$\underline{\quad} + \underline{\quad} + \underline{\quad} = 12$$



TO LINK REPEATED ADDITION WITH THE MULTIPLICATION SYMBOL

Date Learning ladder ref



MULTIPLICATION AND DIVISION


SWE solve problems related to multiplication.

SW find the missing numbers in multiplication calculations.

MW write the equivalent multiplication calculation for the repeated addition calculation.

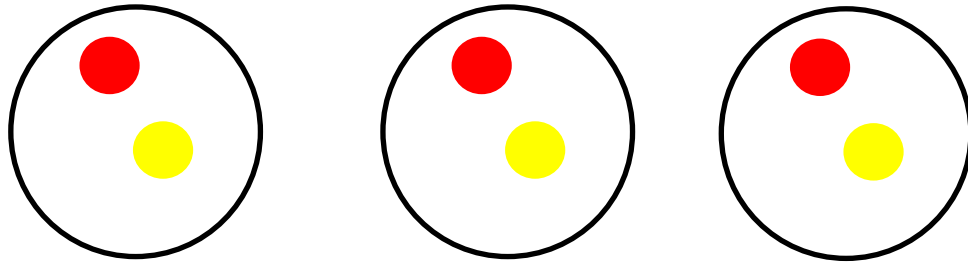
AW add up groups of equal amounts.

11.01.21



GUIDED PRACTICE

There are 3 bags of sweets. In each bag there are 2 sweets. How many sweets are there altogether?

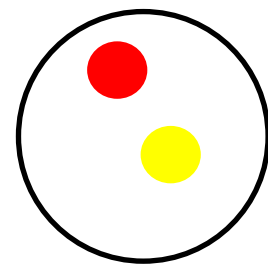
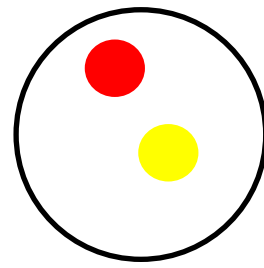
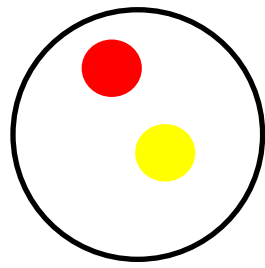


There are ____ equal groups with ____ in each group.

$$\underline{\quad} + \underline{\quad} + \underline{\quad} =$$



GUIDED PRACTICE

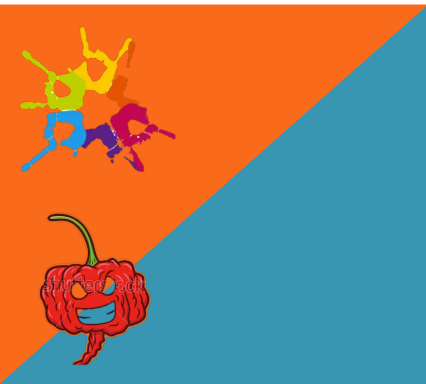


There are **3** equal groups with **2** in each group.

$$2 + 2 + 2 =$$

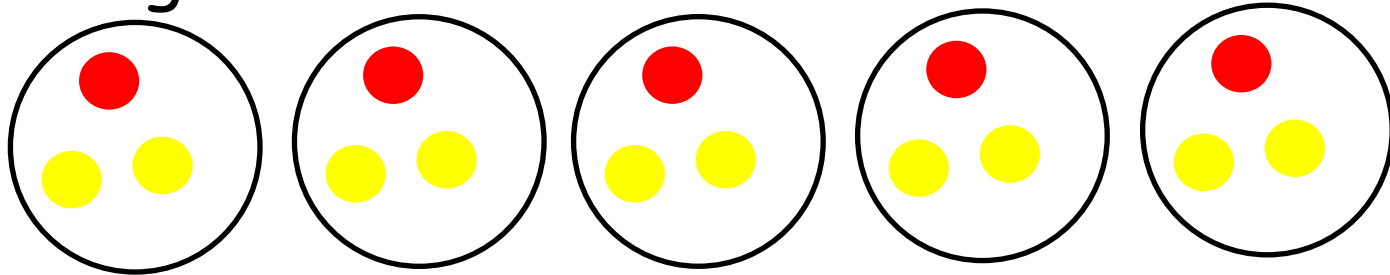
This is the same as writing

2 \times **3** because there is 3 groups of 2.



GUIDED PRACTICE

There are 5 bags of sweets. In each bag there are 3 sweets. How many sweets are there altogether?



There are ___ equal groups with ___ in each group.

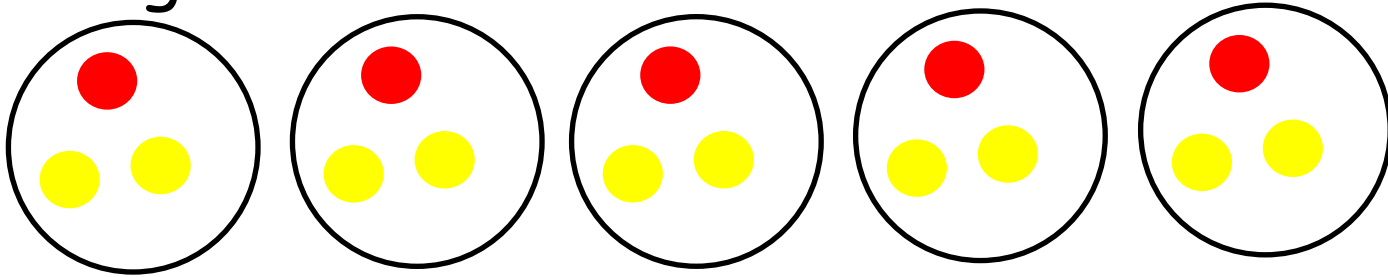
$$\underline{\quad} + \underline{\quad} + \underline{\quad} + \underline{\quad} + \underline{\quad} =$$

$$\underline{\quad} \times \underline{\quad} =$$



GUIDED PRACTICE

There are 5 bags of sweets. In each bag there are 3 sweets. How many sweets are there altogether?



There are 5 equal groups with 3 in each group.

$$3 + 3 + 3 + 3 + 3 =$$

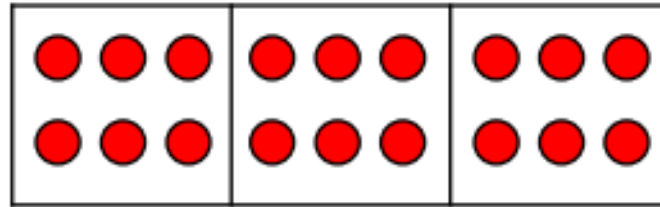
$$3 \times 5 =$$



INTELLIGENT PRACTICE



Complete the sentences to describe the equal groups.



$$\underline{\quad} + \underline{\quad} + \underline{\quad} = 18$$

$$\underline{\quad} \times \underline{\quad} = 18$$

There are equal groups with in each group.
There are three .



Complete:

Three 2s	Draw It	Addition	Multiplication
There are 3 equal groups with 2 in each group.			



INTELLIGENT PRACTICE



$$12 = 4 \times \underline{\quad}$$

$$\underline{\quad} \times 2 = 18$$

$$3 \times \underline{\quad} = 15$$



DIVE DEEPER 1



$$3 + 3 + 3 = 3 \times 3$$

Is Mo correct? Explain why.

Draw an image to help you.

Use $<$, $>$ or $=$ to make the statements correct.

3×5



$5 + 5 + 5 + 5$

2×2



$2 + 2$

10×2



$5 + 5 + 5$



DIVE DEEPER 1



$$3 + 3 + 3 = 3 \times 3$$

He is correct
because
 $3 + 3 + 3 = 9$
and $3 \times 3 = 9$

Is Mo correct? Explain why.

Draw an image to help you.

Use $<$, $>$ or $=$ to make the statements correct.

3×5



$5 + 5 + 5 + 5$

2×2



$2 + 2$

10×2



$5 + 5 + 5$

$3 \times 5 < 5 + 5 + 5 + 5$

$2 \times 2 = 2 + 2$

$10 \times 2 > 5 + 5 + 5$



DIVE DEEPER 2

Think of a multiplication to complete:

$$6 + 6 + 6 > _ \times _$$

The total is 12, what could the addition and multiplication be?

An example:

$$6 + 6 = 12$$

$$6 \times 2 = 12$$



DIVE DEEPER 2

Think of a multiplication to complete:

$$6 + 6 + 6 > _ \times _$$

Any two numbers which multiply together to give an answer of less than 18

The total is 12, what could the addition and multiplication be?

$$6 + 6 = 2 \times 6$$

$$2 + 2 + 2 + 2 + 2 + 2 = 6 \times 2$$

$$3 + 3 + 3 + 3 = 4 \times 3$$

$$4 + 4 + 4 = 3 \times 4$$

$$12 = 1 \times 12$$

$$1 + 1 + 1 + 1 + 1 + 1 + 1 + 1 + 1 + 1 + 1 + 1 = 12 \\ \times 1$$

