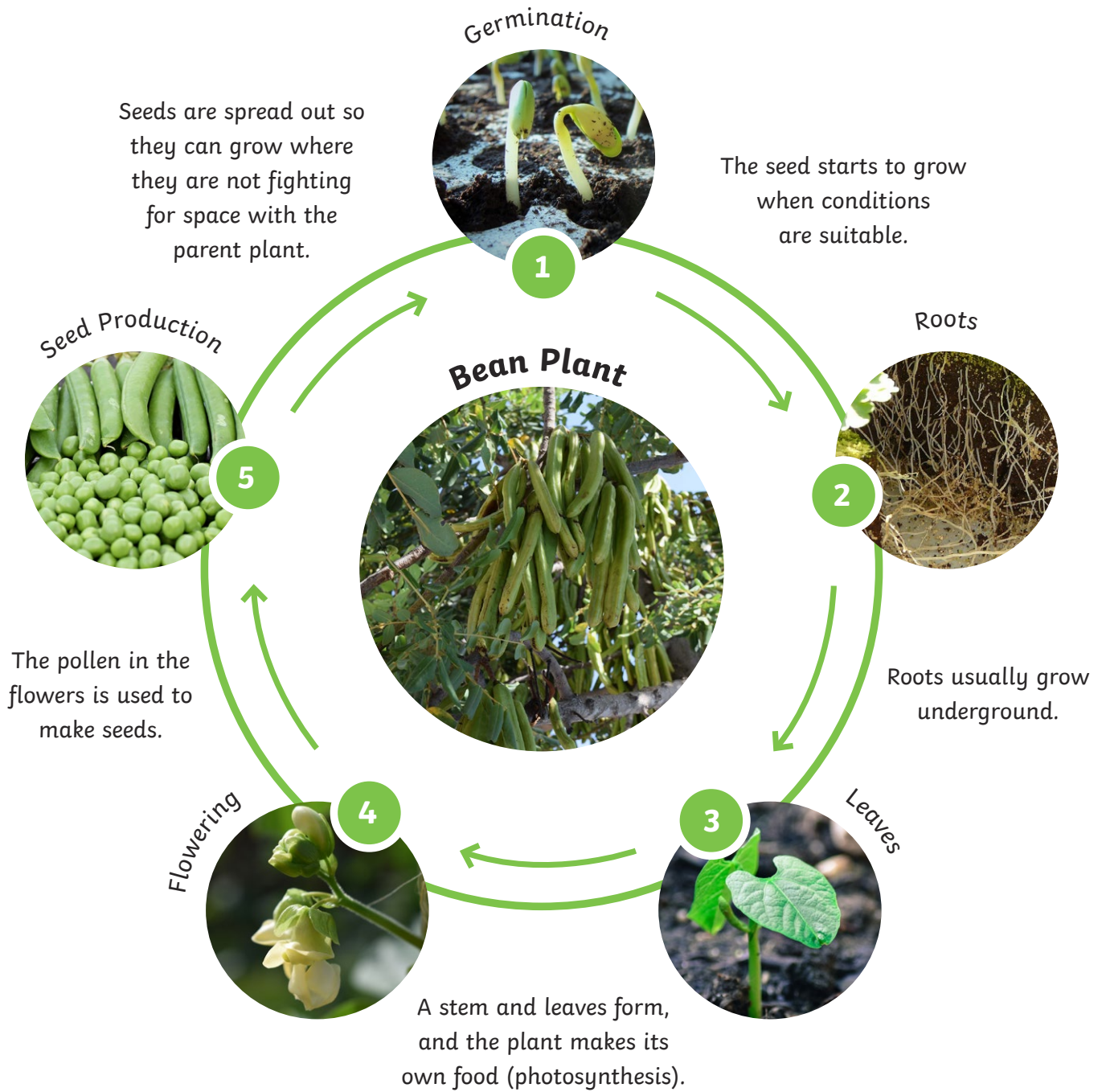


The Flowering Plant Life Cycle



Other Flowering Plants



The Non-Flowering Plant Life Cycle

Germination



Seeds are spread out so they can grow where they are not fighting for space with the parent plant.

The seed starts to grow when conditions are suitable.

1

Roots



Roots usually grow underground.

2

Leaves



A stem and leaves form, and the plant makes its own food (photosynthesis).

3

Fern



Seed Production



Seeds are produced (without flowers)

4

Seed Dispersal



Seeds are spread out so they can grow where they are not fighting for space with the parent plant.

5

Other Non-Flowering Plants

Conifer



Ginkgo

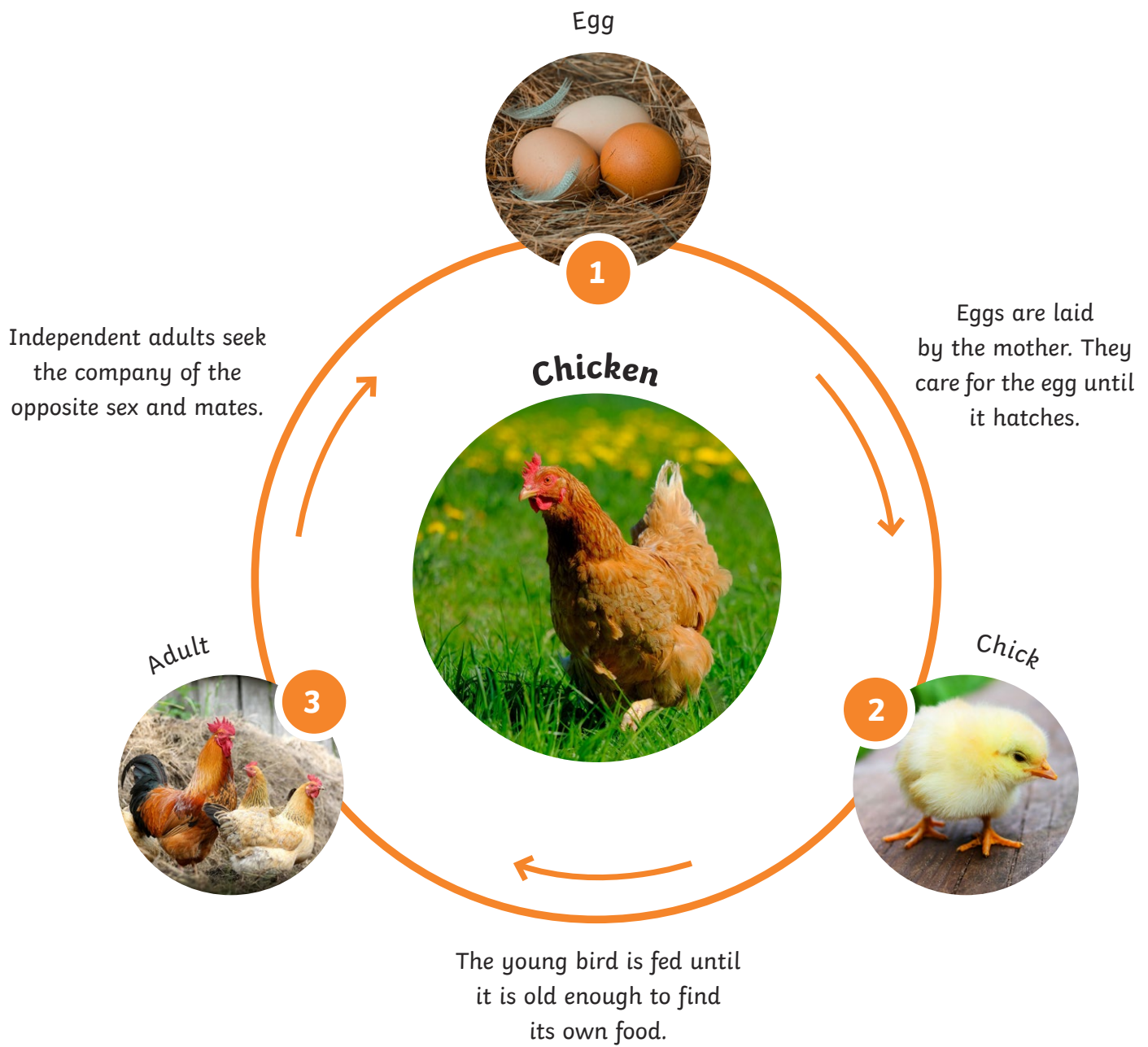


Cycad



'Cyclad cones' by smallcurio is licensed under CC BY 2.0

The Bird Life Cycle



Other Birds

Ostrich



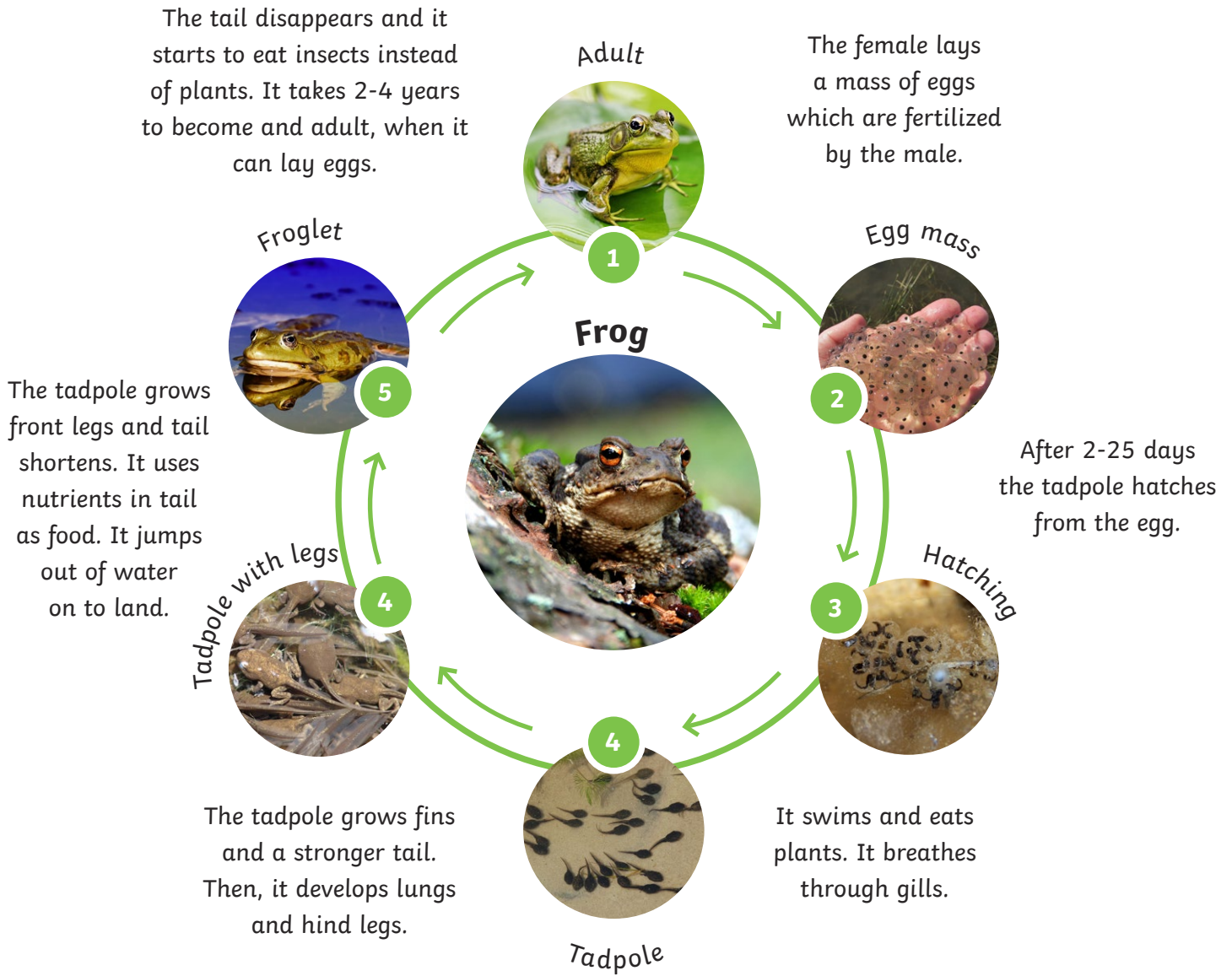
Penguin



Eagle



The Amphibian Life Cycle



Other Amphibians

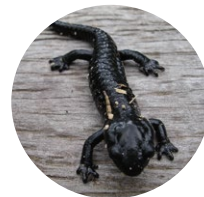
Salamander



Toad

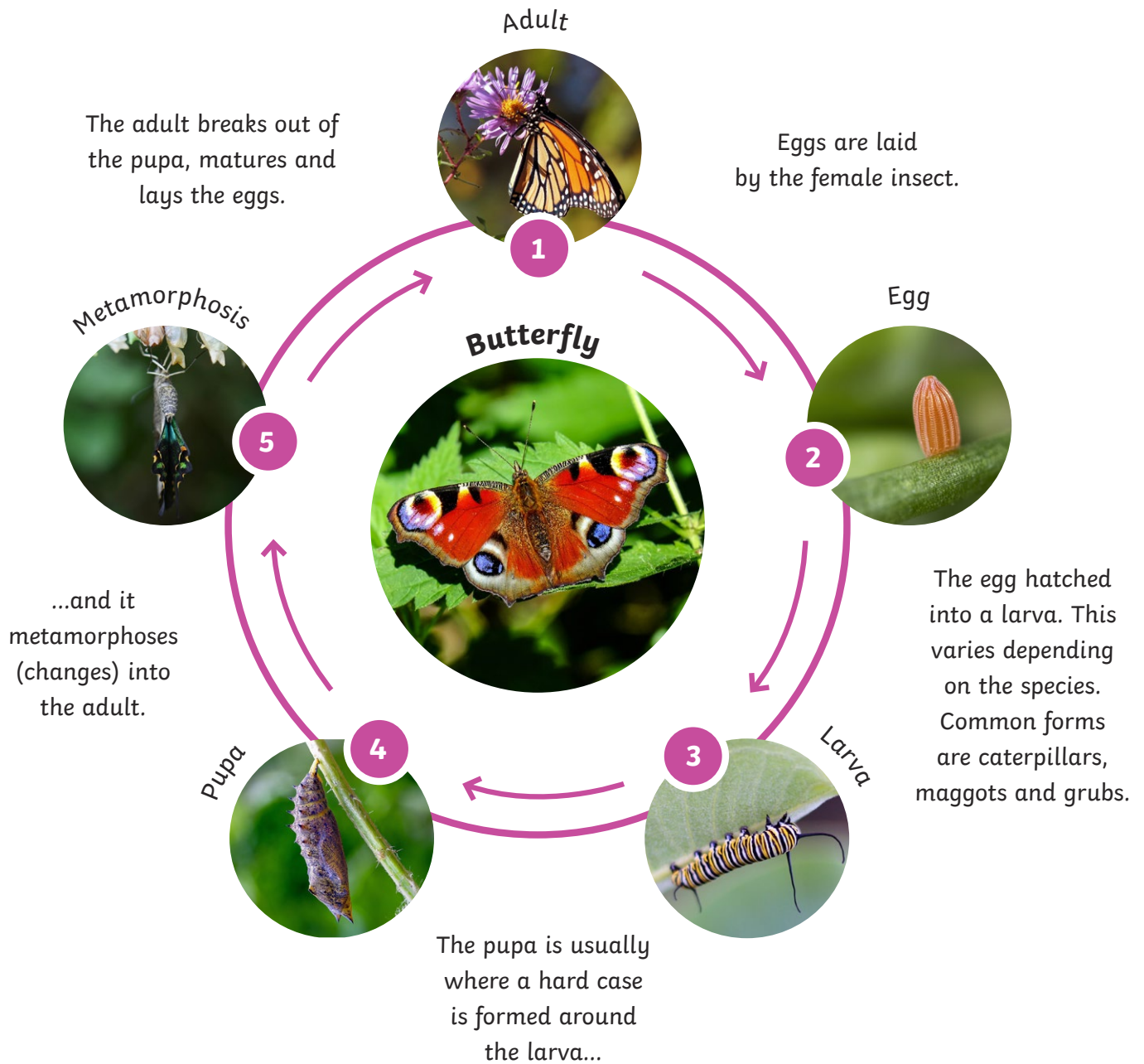


Newt



The Insect Life Cycle

Complete Metamorphosis

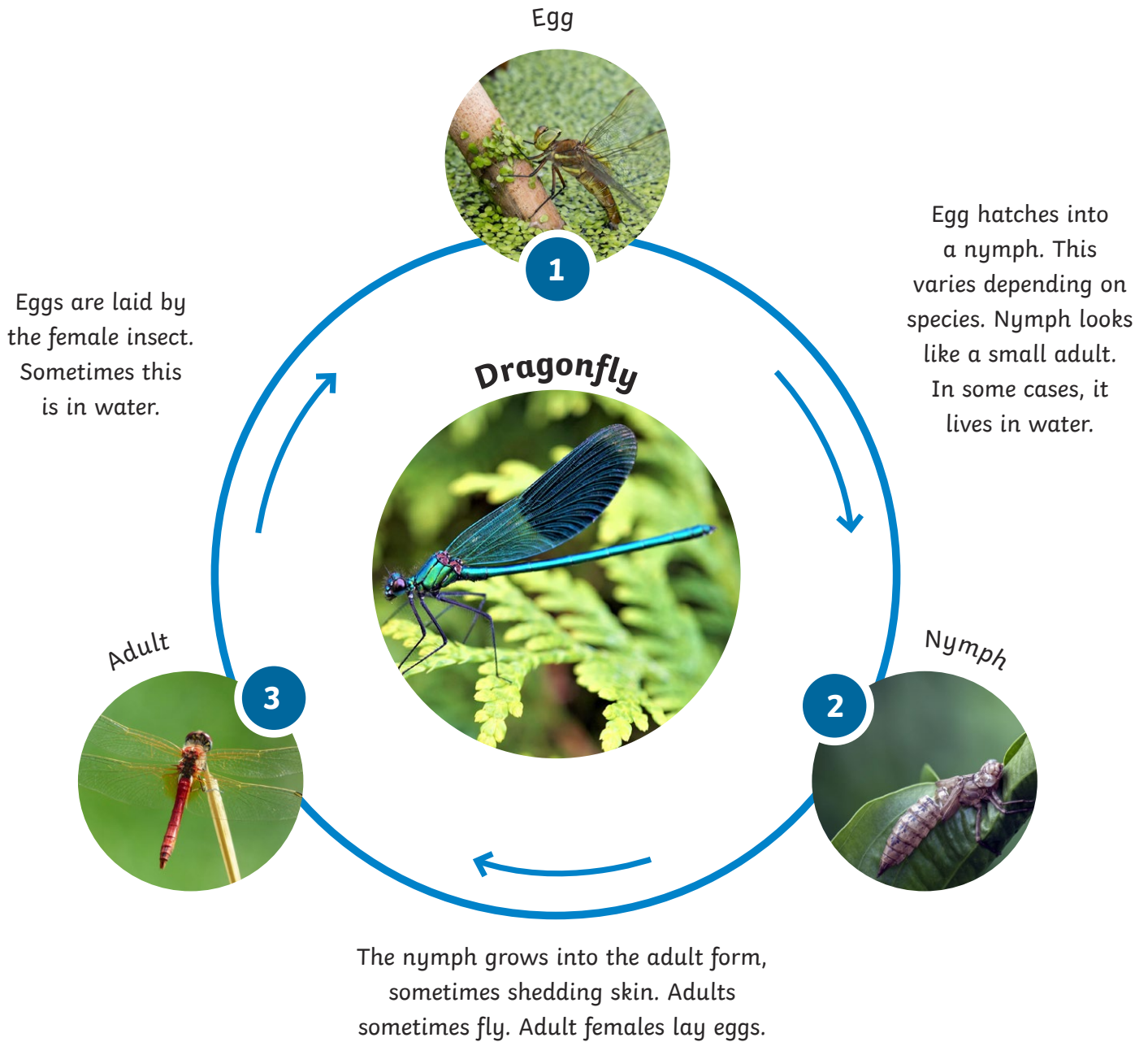


Other Insects that Complete Metamorphosis



The Insect Life Cycle

Incomplete Metamorphosis

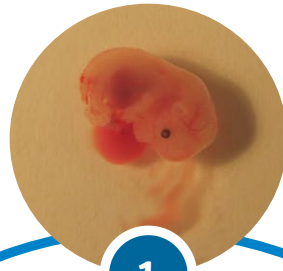


Other Insects that Undergo Incomplete Metamorphosis



The Mammal Cycle

Embryo



1

Embryos grow inside the mother, where it is completely reliant upon the mother.

Dogs

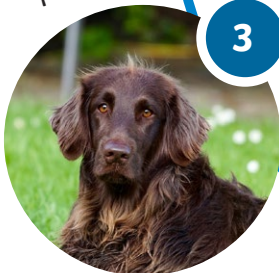


Young



2

Adult



3

Independent adult usually seeks company from the opposite sex and mates. Adult female nurses their young.

Main period of growth and developing independence from other parents.

Other Mammals

Dolphin



Elephant



Human



'mouse embryo' by [Pazit Polak](#) is licensed under [CC BY 2.0](#)